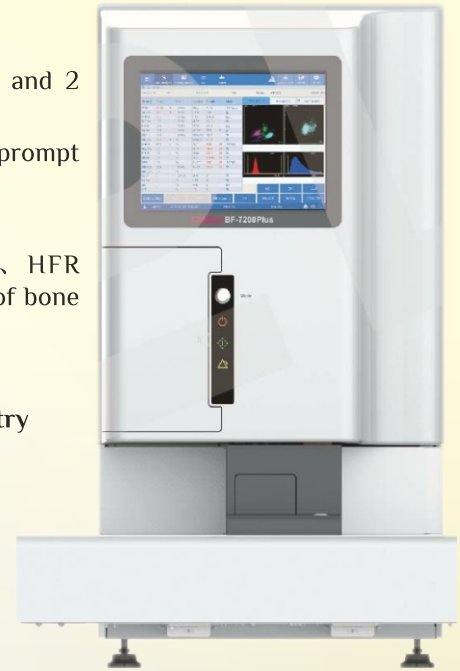


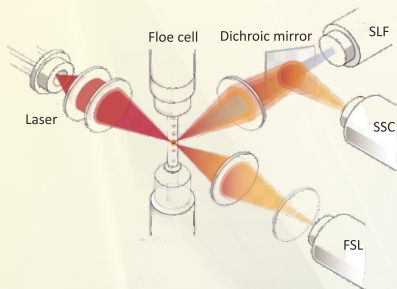
CS7 Pro Automatic Hematology Analysis System

- Blood test parameter: 37 parameters (including RET detection), 5 scattergrams and 2 histograms
- Body fluid test parameter: 7 parameters, 1 scattergrams and 1 histogram, with the prompt function of pathology and morphology abnormality alarms
- Optical analysis for WBC
- Reticulocyte related parameters: RET%, RET#, IRF, RHE, LFR, MFR, HFR
RET & NRBC as important reporting parameters intuitively reflect hematopoiesis of bone marrow erythrocytes test result replaced the research parameters nondeterminacy.



Advanced Platform:

Nucleic acid fluorescence staining integrated with semiconductor laser flow cytometry



Side fluorescent light (SFL)

- Nucleic acid content of cells

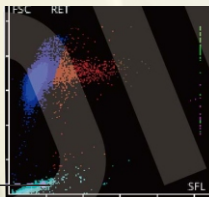
Side scatter (SSC)

- Internal cell structure

Forward scatter (FSC)

- Cell volume information

The advanced platform realizes the analysis of the RET channel scatter plot and the high, medium and low fluorescence intensity of the region through the permeation of fluorescence dye into the cell and nucleic acid material binding, to obtained 7 RET parameters (RET%, RET#, IRF, LFR, MFR, HFR, RHE).

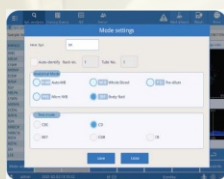


PLT-O

Once the deviation of PLT-O in the RET channel and the PLT measured by the sheath impedance method is found to be too large, the software will give a prompt alarm, which can effectively reduce the interference caused by platelet agglutination, large platelet, cell debris and other factors on the PLT count.

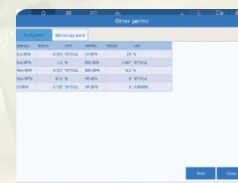
Multiple Test Modes

- 5 sample analysis modes and 5 testmodes can be chosen freely
- Body fluid mode



Analysis Mode: Automatic whole blood mode, Whole blood mode, Pre-dilute mode, Micro-WB mode, Body Fluid mode

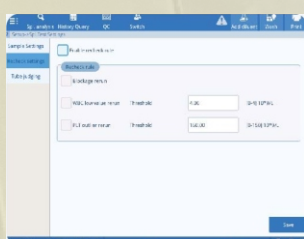
Detection Mode: CBC, CBC+DIFF, RET, CBC+DIFF+RET, CBC+RET



Supporting body fluid test by providing 7 reportable parameters (WBC-BF, TC-BF#, MN%, PMN#, PMN%, RBC-BF)

New Breakthrough

- Automatic recheck function



When the automatic recheck function is enabled, the sample will be automatically rechecked when the PLT and WBC count values are lower than the set threshold to reduce the microscopy rate.

Technical Specification

PARAMETERS:

Parameter 37 blood report parameters: WBC, NEU%, LYM%, MON%, EOS%, BAS%, NEU#, LYM#, MON#, EOS#, BAS#, IG#, 1G%, RBC, HGB, MCV, HCT, MCH, MCHC, RDW-SD, RDW-CV, NRBC%, NRBC#, PLT, MPV, PCT, PDW, P-LCR, P-LCC, RET%, RET#, IIRF, LFR, MFR, HFR, RHE, IPF

7 body fluid report parameters: WBC-BF, TC-BF#, MN#, MN%, PMN#, PMN%, RBC-BF

TEST PRINCIPLE

Cyanide-free colorimetry for HGB test

Sheath impedance method for RBC and PLT test

Semiconductor laser flow cytometry for WBC, RBC, NRBC test

THROUGHPUT

CBC+DIFF: 120 samples / hour

CBC+DIFF+RET: 83 samples / hour

BF: 40 samples / hour

DATA STORAGE CAPACITY

At least 500,000 results

DATA SYSTEM

RJ45 network interface, USB interface, can be connected to LIS/HIS

DIMENSION (DxwxH)

835mmx620mmx770mm

WEIGHT

86kg



Specifications subject to change without notice



JITM C Genes Pvt. Ltd.

H209, 1st Floor, Sector-63, Noida, U.P.-201301 (INDIA)
info@jitmccgenes.com, www.jitmccgenes.com | Customer Care No.: 87458 05386

ISO 13485:2016 Certified Company

